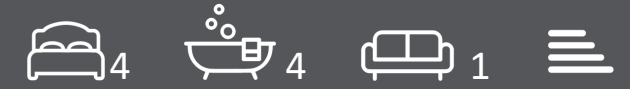


Morgans
PROPERTY

The Gatehouse Courtyard, Leys Park Road, Dunfermline, KY12 0AA
Fixed Price £367,500

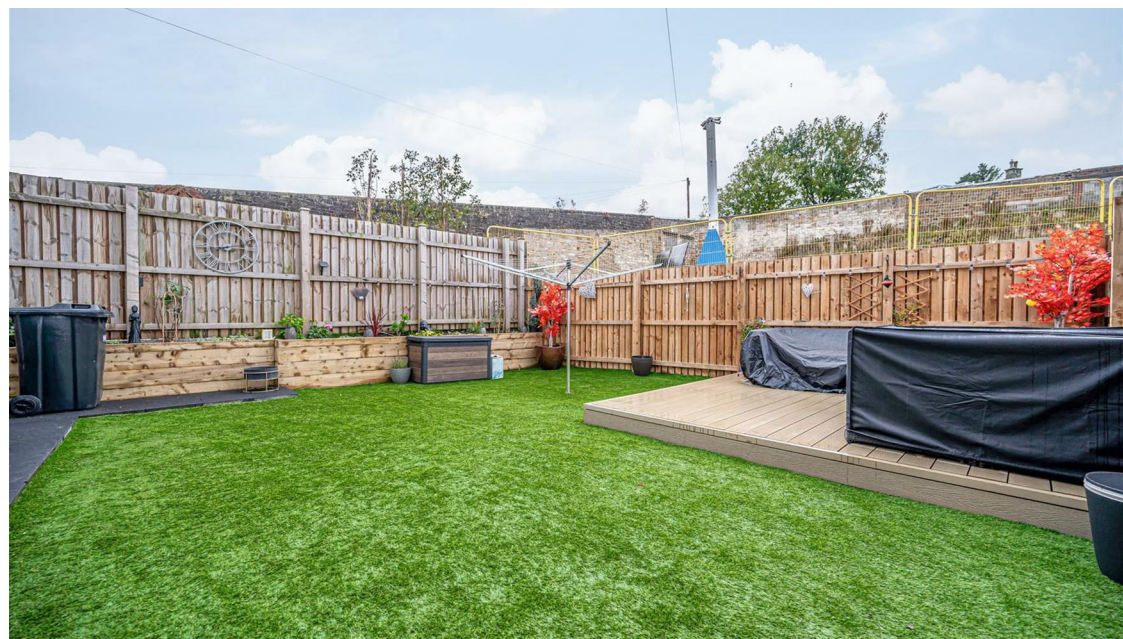
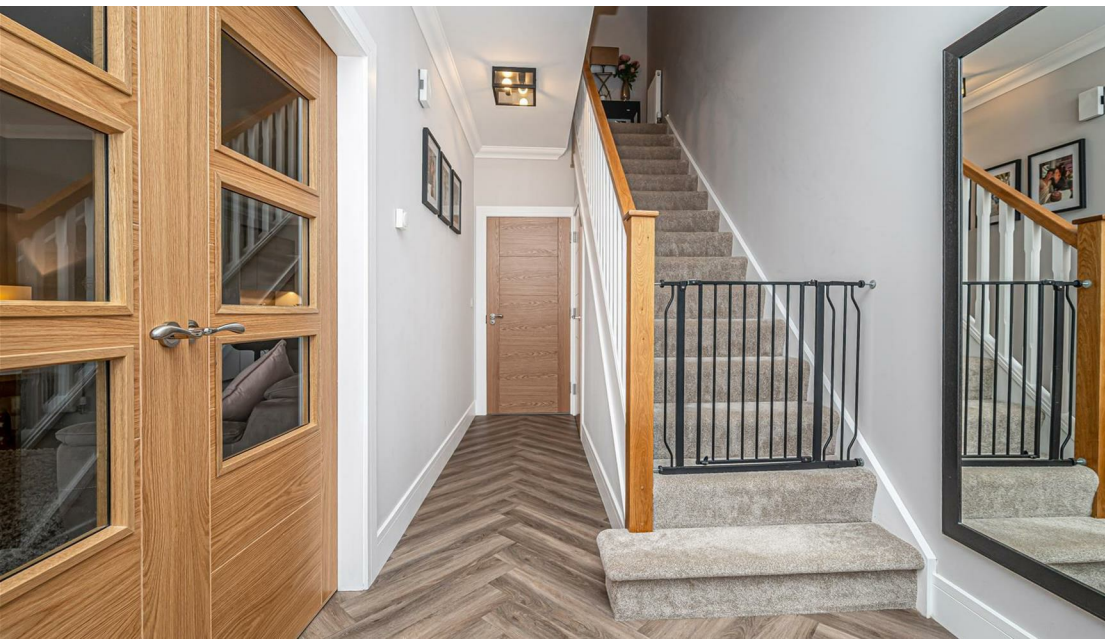






****BACK ON THE MARKET WITH INCENTIVES AVAILABLE - PLOT 2 AVAILABLE - COMPLETION NOV 24****

Last remaining four bed townhouse built by Amerio Homes. Set within an exclusive gated community surrounded by green space, cycle connections and good schooling. They offer luxury homes to families and couples. Situated in the heart of city this exciting development gives discerning buyers the opportunity to buy off plan and discuss directly with the developer their needs and specification. Your living room is designed with extra height ceilings and ornate cornicing to create a feeling of space and tranquillity and finished with beautiful Farrow and Ball colours of your choice. Hand finished skirtings, facings and solid oak doors complete a perfect look throughout the inside of your home, with every room complemented further by Lorimer windows from CR Smith. Your stunning kitchen will epitomise modern living, with practical luxuries, top of the range appliances and stunning worktops. The bedrooms would be finished with an eye-catching feature wall and LED spotlights, and striking bathrooms with Porcelanosa tiling, top quality sanitary ware and feature lighting. Further specification detail available on request or visit www.ameriohomes.co.uk.



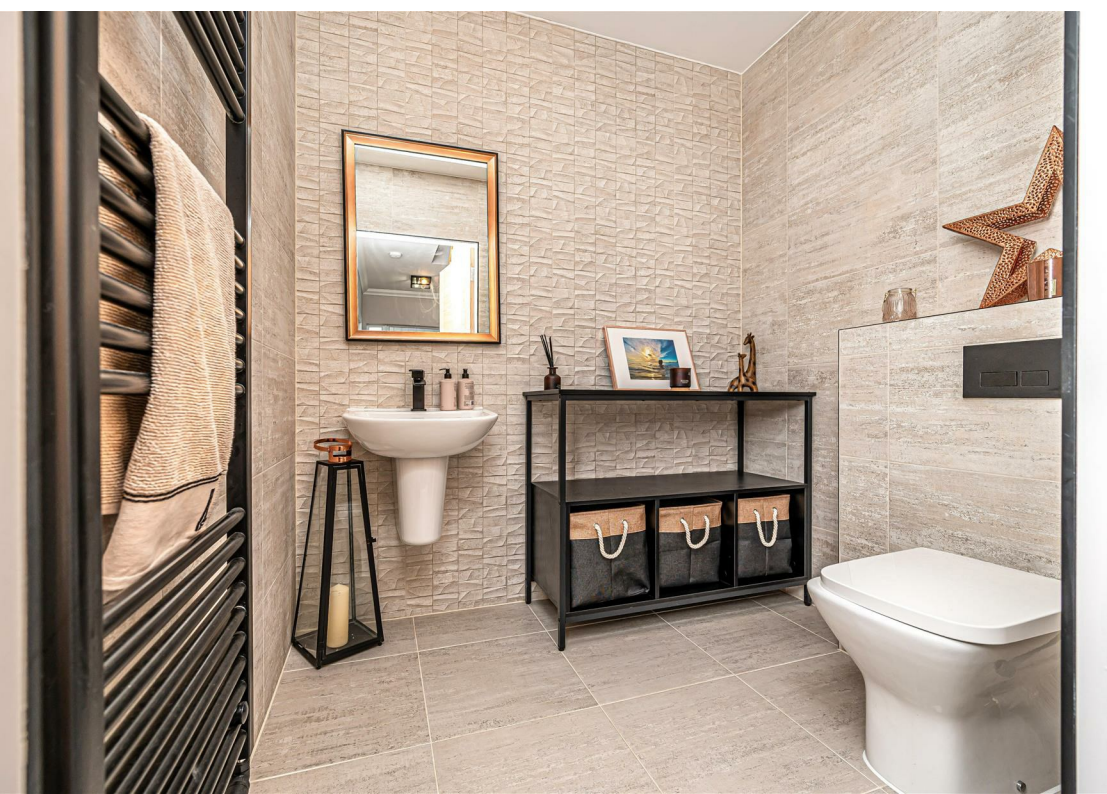


LOCATION

The ancient capital of Dunfermline won its bid to have official status city in May 2022, as part of the civic honour's competition to celebrate the Queen's Platinum Jubilee. The City of Dunfermline is of considerable historic interest and is the resting place of King Robert the Bruce. Carnegie's Birthplace museum, the Abbey and Abbot House reflect the historic interest of the city, whilst recent more modern developments include the Carnegie Museum and Library. Dunfermline is located approximately five miles from the Forth Bridges and is therefore particularly popular with commuters to Edinburgh and many other parts of the central belt. It also has easy access to the M90 motorway with its direct links to Edinburgh, Perth and Dundee and across the Kincardine Bridge by way of motorways to Stirling, Glasgow and the West. Dunfermline benefits from a full range of shops, social and leisure facilities and educational establishments. The local railway stations provide a regular service to Edinburgh with intercity links to other parts of the UK. There are regular and convenient bus services both local and national.

AGENTS NOTE

All enquires contact Michaela at Morgans direct on 01383 629 803.









Ground Floor



First Floor



Second Floor



SOLICITORS | PROPERTY

33 East Port, Dunfermline, Fife, KY12 7JE

Tel: 01383 620222 Fax: 01383 621213

www.morganlaw.co.uk



eSpC

rightmove

Zoopla.co.uk

onTheMarket.com

s1homes.com

naaa | propertymark

PROTECTED

AGENTS NOTE These particulars do not form part of any contract and the statements or plans contained herein are not warranted nor to scale. Approximate measurements have been taken by electronic device at the widest point. Services and appliances have not been tested for efficiency or safety and no warranty is given as to their compliance with any Regulations. No movable items will be included in the sale.